

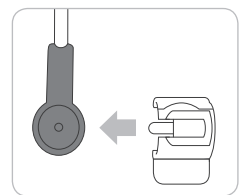
# JOOLZ POSITIVE DESIGN

designed in The Netherlands

instruction manual - Joolz parasol  
 Gebrauchsanweisung - Joolz Sonnenschirm  
 manual de instrucciones - Joolz sombrilla  
 manuel d'instructions - Joolz ombrelle

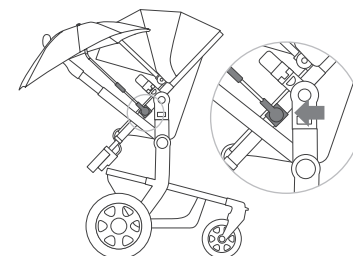
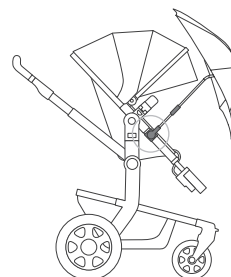
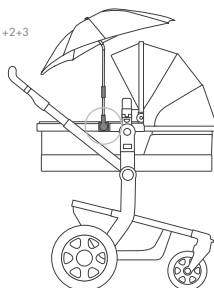


Joolz Day Joolz Geo



- 1 = Joolz Day<sup>1+2+3</sup>
- 2 = Joolz Geo<sup>1+2</sup>

Joolz Day<sup>1+2+3</sup>



**NOTE:** attach the clip directly next to the plastic. Lower positioning may cause scratches to the chassis

**HINWEIS:** Befestige den Clip am Rahmen direkt unter dem Sicherheitsbügel auf dem Plastikteil um eventuelle Kratzer auf dem Rahmen zu vermeiden.

**NOTA:** coloque el clip directamente al lado del plástico. Un posicionamiento más bajo puede causar daños en el chasis.

**REMARQUE:** attachez le clip directement à côté du plastique. Le positionner plus bas peut occasionner des rayures sur le chassis.

Joolz Geo<sup>1+2</sup>

